



R. C. Patel Educational Trust's

R. C. Patel Arts, Commerce and Science College

Karvand Naka, Shirpur 425405, Dist - Dhule, Maharashtra

☎: (02563) 299328

E-mail: principal@rcpasc.ac.in

President

Hon. Bhupeshbhai Patel

Principal

Dr. D. R. Patil

Date: 07/08/2019

Department of Microbiology and Biotechnology

Academic Year 2019-20

Blood Group Detection and Hygiene Awareness Camp

Objective: To detect the blood groups of individuals in the tribal area at R. C. Patel Madhyamik Ashram Shala, Waghadi Tal- Shirpur Dist - Dhule.

Activities: Students from M.Sc. with the help of some faculty members conducted blood tests to determine the blood groups of students and other members from the tribal area. This information is crucial for emergency medical situations and can also help in promoting blood donation. Students of B. Sc. prepared and presented posters. Other students presented a Street Play in local language for Hygiene awareness.

Target Audience: All the students from the school, faculty members from the school especially those who have never had their blood group identified.

Outcome: Participants received a card indicating their blood group, which they can use for medical records.

Brief of the Program:

From the past 19 years, The “Plasmid Club” and “Red Ribbon Club” formed by the Department of Microbiology and Biotechnology is organizing and successfully completing **Blood group Detection and Hygiene Awareness camp**. This year, The Department of Microbiology and Biotechnology organized **Blood group Detection and Hygiene Awareness camp** on 06th August 2019 at R. C. Patel Madhyamik Ashram Shala, Waghadi Tal- Shirpur Dist - Dhule. The program started with Inauguration of the program by Dr. D. R. Patil, Principal, R. C. Patel Arts, Commerce and Science College, Shirpur, Dist - Dhule. The post inauguration programs included the detection of blood by Students of M. Sc. (Microbiology and Biotechnology) which ended in detection of Blood-group of 143 students from Primary and Secondary school. Many of them were unaware of their Blood Group, for which our students provided them with coupons mentioned with their Blood group and BMI. Simultaneously, our students from B. Sc (Microbiology and Biotechnology) arranged their

posters and presented various general health issues which are faced in tribal areas. The program took a break at 01:00 PM for lunch, after which it resumed again. At last, the students performed a street play on Hygiene awareness which can be seen using the following link (<https://youtu.be/HjSWCZhIWB8?si=n0k1uWnUllDXNKQe>). The President of the village Waghadi, Tal. Shirpur, Dist. Dhule (सरपंच) thanked the Principal, Head, Faculties and Students of Department of Microbiology and Biotechnology, R. C. Patel Arts, Commerce and Science College, Shirpur for their efforts for the success of this program. More details of the program can be seen on website.



Dr. Sandip P. Patil
Head,
Department of Microbiology



Dr. Ravindra H. Patil
Head,
Department of Biotechnology



Some Glimpse of the Program:



Students of M. Sc. pricking finger of an old lady for Blood Group detection



Students of M. Sc detecting Blood Group using standard protocol



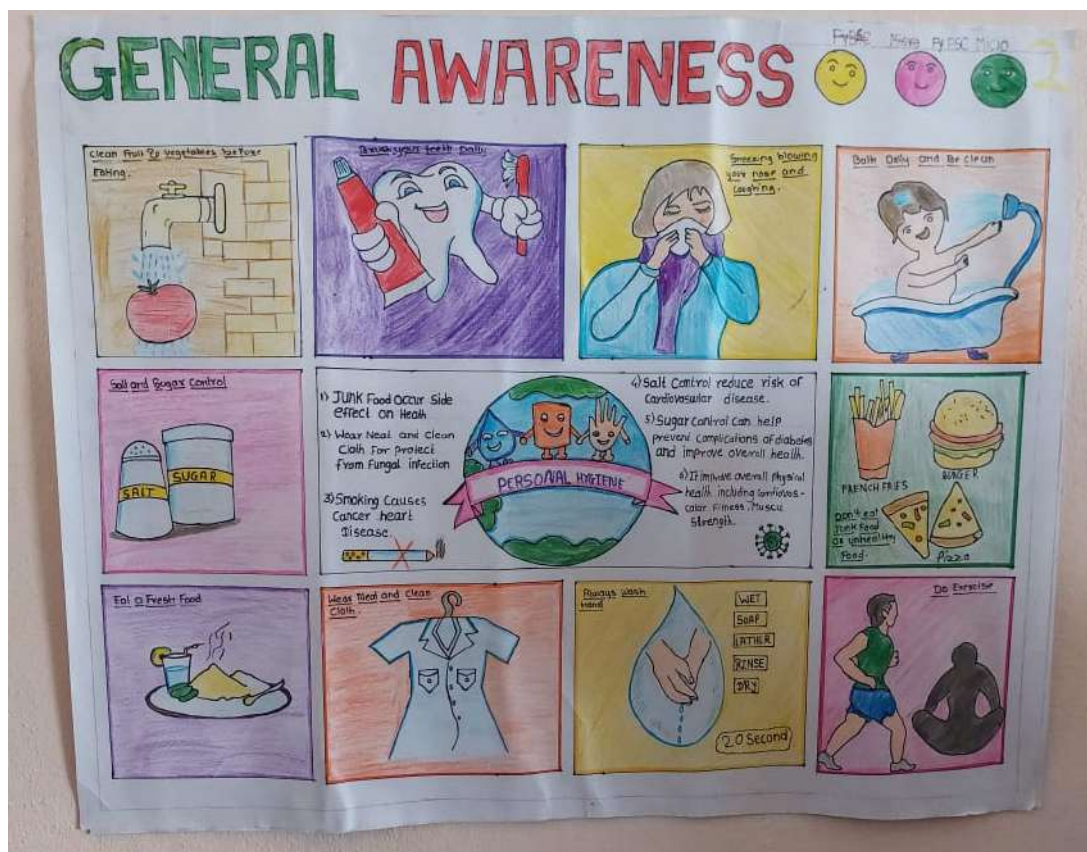
Systematic documentation of details



Students and Faculty members of Plasmid Club and Red Ribbon Club



Hygiene awareness by Poster presentation



Poster by Student from F. Y. B. Sc.

Outcomes of the Activity: List of the Beneficiaries

Blood group detection & Disease			
Sr.No	Name	Blood group	BMI
1)	Sanjay patil	B ⁺ ve	27.1 N
2)	Gulab Baburav patil	B ⁺ ve	24.8 N
3)	Amol patil	O ⁺ ve	22.8
4)	G.N. Behare	A ⁺ ve	29.8
5)	Sunil prakash	B ⁺ ve	17.2
6)	Sahebrao onkar patil	B ⁺ ve	19.7
7)	Shivdas patil	A ⁺ ve	23.2
8)	Sitaram vilas pawara	A ⁺ ve	15.8
9)	Makaram rama pawara	A ⁻ ve	15.2
10)	Patil Akshay	O ⁺ ve	22.9
11)	Mamta Gaurubakshani	A ⁺ ve	18.5
12)	Dhiraj chaudhari	B ⁺ ve	19.0 N
13)	Ashwini patil	A ⁺ ve	14.4
14)	Kaustubh dilip patil	B ⁺ ve	22.1
15)	Shashikant patil	B ⁻ ve	27.9
16)	patil Mahendra	B ⁺ ve	26.6
17)	Wagh Mahuzi	AB ⁺ ve	20.2
18)	chaudhari Karishma	O ⁺ ve	20.6 N
19)	Mahendra patil	A ⁺ ve	25.7
20)	patil Kiran	A ⁺ ve	23.1
21)	Nilesh patil	A ⁺ ve	23.1
22)	Jayesh patil	B ⁺ ve	16.2
23)	Kesharwani Jyoti	O ⁺ ve	24.9
24)	Nikita patil	AB ⁻ ve	18.3
25)	Dipak Wadile	B ⁺ ve	23.5
26)	Sachin ahire	O ⁺ ve	17.3
27)	Jadhav manish Satish	O ⁺ ve	22.6
28)	chavan Jayita	AB ⁺ ve	18.7
29)	Girase ashwini	B ⁺ ve	21.1
30)	Harshada kairad	O ⁺	22.7
31)	Manjusha Jadhav	B ⁺ ve	24.0
32)	Shubham Vlsave	B ⁺ ve	21.6
33)	Harshada Jitendra koli	B ⁺ ve	
34)	Ravi prakash Thakare	A ⁻ ve	

Sr No	Name	Blood group	BMT	
35	Dhanshari Sukdev patil	B ⁺	13.2	55
36	Divya Vishnu Bhil	O ⁺ ve	11.9	85
37	Kavya	A ⁺	13.5	45
38	Nandini Shahar more	B ⁺	13.4	25
39	Bhagyashri devidas	O ⁺ ve	11.9	85
40	Gurukhailal Patil	A ⁺	13.5	45
41	Roshni Chabilal	B ⁺	13.4	25
42	Nayan Nayanesh patil	A ⁺ ve	13.9	25
43	Dipak Bhayashree	B ⁺ ve	13.4	25
44	yash Namdev	B ⁺ ve	13.4	25
45	Nilesh Kailas Bhil	O ⁺ ve	13.4	25
46	Gopal Bapu Bhil	O ⁺ ve	13.4	25
47	Kuldip Rameshwar	O ⁺ ve	13.4	25
48	Ghantaram sitaram	B ⁺ ve	13.4	25
49	Aakash Ramdas	O ⁺ ve	13.4	25
50	Suresh Ratan	O ⁺ ve	13.4	25
51	Dipesh Mukesh patil	B ⁺ ve	13.4	25
52	Dipak Tukaram	A ⁺	13.4	25
53	Ganesh Jagann Bhil	O ⁺ ve	13.4	25
54	Varshkvi Phatu	O ⁺ ve	13.4	25
55	Manish Vilay patil	A ⁺ ve	13.4	25
56	Suman Nandhaya	A ⁺ ve	13.4	25
57	patil Bhupendra	AB ⁺	13.4	25
58	Avinash Vinod	B ⁺ ve	13.4	25
59	Nandini Shyanal more	O ⁺ ve	13.4	25
60	Dipak Bhayashree	O ⁺ ve	13.4	25
61	Panchkaj Barik	AB ⁺	13.4	25
62	Gaurav Vasudev	B ⁺ ve	13.4	25
63	Aakash Ramdas	B ⁺ ve	13.4	25
64	Dilker Mohilal Bhil	B ⁺ ve	13.4	25
65	Nilesh Subhash Bhil	B ⁺ ve	13.4	25
66	Vaibhav Radheshyam	B ⁺ ve	13.4	25
67	Nikita Jitendra patil	B ⁺ ve	13.4	25
68	Charu Mukesh patil	B ⁺ ve	13.4	25

sr No	Student's Name	Blood group	BMI
69	payal Ramdas Bhil	A+ve	11.3
70	parvati Rameshwar	O+ve	13.7
71	vijay shalik	B+ve	12.5
72	Shantaram Sitaram	B+	12.9
73	Bhura pawara	A+	14.2
74	Raj pundlik Sonevane	B+ve	14.2
75	Ranjit Dilip pawara	A+ve	13.7
76	Vaibhav Radheshayam	B+	12.5
77	Bhavesb Sanjay patil	B+	13.5
78	giten Bajirav	AB+	8.2
79	manoj Badu patil	B+ve	13.2
80	Mayanshree Shankar	B+	12.7
81	Mansi dinesh patil	B+ve	14.0
82	Divyad punam	B+ve	14.2
83	chaitali Kaitash pawar	A+	11.7
84	Sarika Nyaneshwar	B+ve	13.9
85	Hiteshaji Nyaneshwar	O+ve	12.5
86	Kalyani sravan Bhil	A+ve	12.9
87	chetna Bajirav patil	O+ve	12.9
88	Ranjana ver vishnu	A+	12.9
89	Shubhangi Jagan Bhil	O+ve	12.9
90	Krishna punam Bhil	B+ve	12.9
91	Uday Suresh Bhil	A+ve	11.6
92	Jayesh Gopal Bhil	B+ve	12.6
93	Bhushan yashpat Bhil	O+ve	11.5
94	Sukla Arangan Bhil	B+ve	12.9
95	Govinda kailas Pawar	A+ve	11.2
96	Rakesh Ramlal Bhil	AB+	12.3
97	Shaikhaz Raju Bhil	B+ve	12.4
98	Sonu Bhaidas Bhil	A+ve	13.7
99	shamrav devids Bhil	A+ve	12.1
100	Kailas Matulal patil	A+ve	12.4
101	Dipak Shantaram Bhil	O+	11.1
102	Pranod Madhwa	B+	20.2

MEENA				
PAGE NO.:				
DATE: / /				
Sr.No	Student's Name	Blood group	BMI	
103	Mahesh Pawar	B ⁺	16.7	
104	Balu murlihar patil	O ⁺	26.9	
105	Krishna punam Bhil	B ⁺	11.6	
106	Dipik Dilip Bhil	AB ⁺	11.7	
107	Kiran Nana Bhil	B ⁺	14.9	
108	Mahesh Mahendra Patil	B ⁺	14.1	
109	Pradeep Amrud Bhil	AB ⁺	14.2	
110	Kiran chotu Bhil	O ⁺	13.9	
111	Pravin Budni Pawar	O ⁺	14.1	
112	Krushna Ramesh Pawar	A ⁺	13.9	
113	Vikas Pawar	A ⁺	14.5	
114	Savitri Baijram Pawar	AB ⁺	11.5	
115	Leena Budni Pawar	O ⁺	9.8	
116	Arati kaluram Pawar	O ⁺	12.8	
117	Lakhan Bhurat Bhil	O ⁺	13.9	
118	Veishali Lali	O ⁺		
119	Satoni Ishwar Bhil	B ⁺	13.1	
120	Savita Patil	A ⁺	22.5	
121	Shirsath Manisha	B ⁺	23.5	
122	Poonam Ravindra Bhil	B ⁺		
123	Ritesh Bhata Patil	A ⁺	14.9	
124	Pooja Dinesh Bhil	B ⁺	18.4	
125	Poonam Ravindra Bhil	B ⁺	12.8	
126	Rajan Shantaram Bhil	B ⁺	15.2	
127	Archana Dinesh Bhil	A ⁺	14.6	
128	Raju Bhura Bhil	A ⁺	12.2	
129	Sapna Ratilal Bhil	O ⁺		
130	Vansha Ramesh Patil	A ⁺	17.6	
131	Gayatri Soma Gosavi	B ⁺	18.3	
132	chetan Nasant Patil	B ⁺	13.4	
133	Patil Anpita Prakash	O ⁺	19.9	
134	Mangesh Bhikun Patil	A ⁺	12.2	
135	Bhagyeshi Gopal Bhil	B ⁺	16.4	

SR No.		Student's Name	Blood G. group	BMT.
136.		Nilesh V. Patil	AB ⁺ ve.	28.5 N
137		Bebibaei Rajendra Patil	AB ⁺ ve	24.0 N
138		Patil Jaya vilas	A ⁺ ve	28.10 N
1		Patil Anil	A ⁺ ve	30.10
139		Vikas Dadabhai Patil	B ⁺ ve	25.6
140		Bibhade Mayur vilas	B ⁺ ve	21.5 N
141		Jadhav Rakesh	B ⁺ ve	19.9 N
142		Patil Alkash	B ⁺ ve	20.1 N
143		Patil Sampada	B ⁺ ve	23.9 N

Verified by:



Dr. D. R. Patil

Dr. D. R. Patil
PRINCIPAL

R. C. Patel Educational Trust's
R. C. Patel Arts, Commerce and Science College
Shirpur, Dist.-Dhule (M.S.) 425405